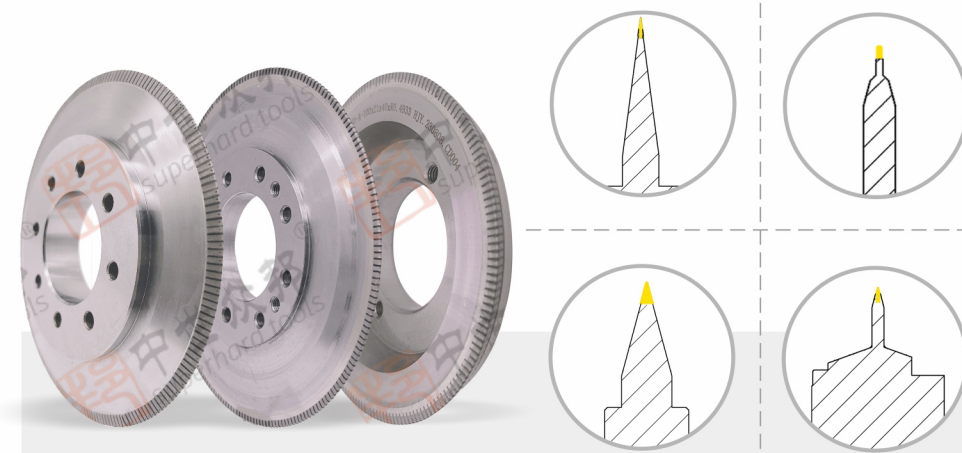


SUPPLIER OF PRECISION PROFILE GRINDING AND DRESSING TOOLS

精密成型磨削与修整磨具供应商

满足国家高端需要 打造国产高端品牌
Meet the high-end needs and Build high-end brands

CVD修整滚轮 CVD DRESSING ROLLERS



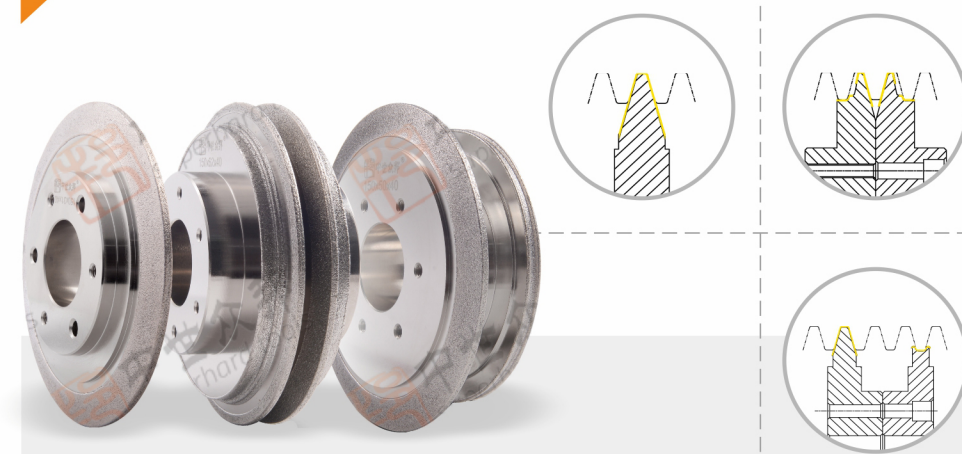
【磨料材质】:CVD • 【制造工艺】:CVD镶嵌法/CVD mosaic method • 【使用方式】:CNC数控轨迹修整/CNC track trimming

本产品配套国内外数控磨床，应用于各行业成型磨削砂轮的数控轨迹修整加工，通用性较强。

This product is equipped with CNC grinding machines domestic and abroad, which is used in CNC trajectory dressing of profile grinding wheels in various industries, with has strong versatility.

直径D(mm)	内孔H(mm)	厚度T(mm)	角度(°)	圆弧R(mm)
125/130	40	10/15	30	0.25/0.6
150	52	20/22/25	15/20	0.1/0.3/1.5
140	70	25	28	0.15

外镀法修整滚轮 OUTER PLATING DRESSING ROLLERS



【磨料材质】:金刚石/Diamond • 【制造工艺】:外镀法/Outer plating • 【使用方式】:切入式成型修整/Plunge cut profile trimming

本产品配套国内外数控磨床，应用于齿轮蜗杆磨砂轮的粗修加工。
This product is matched with CNC grinding machines at home and abroad, and is used for rough machining of gear worm grinding wheel.

直径D(mm)	内孔H(mm)	厚度T(mm)
120	52	40
150	40	62

CBN成型磨轮 CBN PROFILE GRINDING WHEELS



小模数齿轮成型磨轮
Profile grinding wheels for Small module gears

本产品用于航空工业或其他精磨部件中小模数齿轮的成型磨削，配套国内外专用数控齿磨床，磨轮使用过程中不需要修整，轮廓精度可达0.0015mm。

This product is used for the profile grinding of small and medium module gears in the aviation industry or other precision grinding parts. It is equipped with special CNC gear grinding machines domestic and abroad. The grinding wheels are trim-free, and the contour accuracy can reach 0.0015mm.

齿轮成型磨轮
Profile grinding wheels for gears

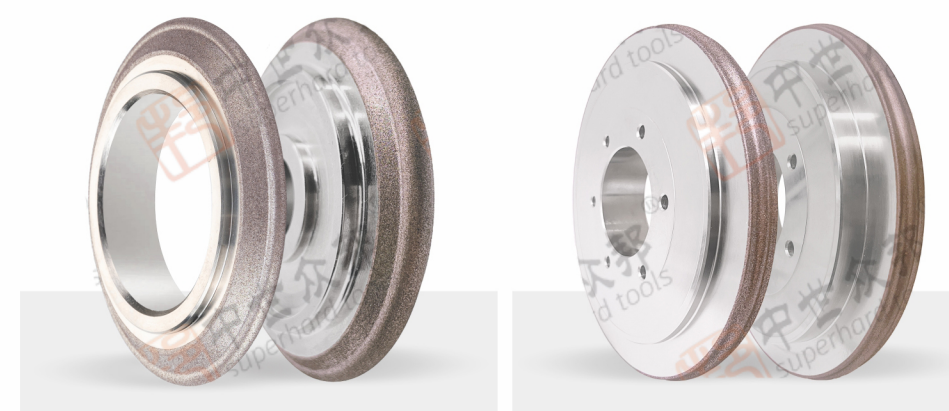
本产品主要用于加工直齿轮和斜齿轮，砂轮轮廓形状精度来保证齿轮精度。配套国内外数控齿磨床，可一次装夹进行粗、精磨削加工，磨轮不需要修整。

This product is mainly used for the processing of the spur gear and the helical gear, the accuracy of the grinding wheel ensures the accuracy of the gear. Supporting domestic and foreign NC gear grinder, the rough grinding and fine grinding can be finished at one time, and the grinding wheel needn't trim.

单斜边磨齿砂轮
Single bevel grinding wheel

本产品用于齿形两侧面的精磨，以及齿轮、蜗轮滚刀的磨削等。

This product is used for the fine grinding of both sides of the tooth profile, as well as the grinding of gears and worm gear hob.



RV减速机针齿壳齿槽成型磨轮
Profile grinding wheel for the tooth groove of the RV reducer pin gear shell

本产品用于机器人RV减速机针齿壳齿槽的成型磨削，配套国内外专用数控磨床，磨轮使用过程中不需要修整，轮廓精度可达0.0015mm。

This product is used for the forming and grinding of the tooth shell of the robot RV reducer. It is equipped with special CNC grinding machines domestic and abroad. The grinding wheels are trim-free, and the contour accuracy can reach 0.0015mm.

RV减速机摆线轮齿形成型磨轮
Profile grinding wheels for Cycloid gear tooth of the RV reducer

本产品用于机器人RV减速机摆线轮齿形的成型磨削，配套国内外专用数控磨床，磨轮使用过程中不需要修整，分为粗磨轮和精磨轮，精磨后的产品轮廓精度可达0.003mm。

This product is used for profile grinding of the cycloidal wheel tooth profile of the cycloidal pin wheel reducer in the robot RV reducer. It is equipped with special CNC grinding machines domestic and abroad. The grinding wheel does not need to be trimmed during use. The contour accuracy of the ground product can reach 0.003mm.



郑州众邦超硬工具有限公司成立于2005年，位于郑州市新材料产业园区。是民营的国家高新技术企业，河南省科技小巨人培育企业，河南省专精特新企业；是中国摩擦密封材料协会、中国压缩协会、机床工业协会、中国铸造协会、机械传动理事会、中国复合材料工业协会会员单位。公司目前共取得各项国家专利42项，其中发明专利9项，实用新型专利33项。

公司采用国际先进工艺，引进了德国德马吉和美国哈挺数控车床、日本光学曲线磨床、日本数控金刚石滚轮工具磨床等一流生产设备，采用德国蔡司三坐标测量仪、英国泰勒霍普森粗糙度轮廓仪和圆度测量仪、日本基恩士超景深显微镜等顶级检测设备。为轴承、齿轮、转向器、RV减速机、导轨滑块、航空叶片、汽轮机叶片、丝杠连杆等国家重点行业提供精密成型磨削和高端修整磨具。

Zhengzhou Zhongbang Superhard Tools Co., Ltd. established in 2005, locates in Zhengzhou New Material Industrial Park. We are a private national high-tech enterprise, science and technology giant cultivation enterprise, specialized precise distinctive innovative enterprise. Member units of CFSMA, China Compressor Association, CMTBA, China Foundry Association, Mechanical Transmission Council, CCIA. The company has obtained 42 national patents, including 9 invention patents and 33 utility model patents.

The company adopts international advanced technology and introduces first-class production equipment such as DMG from Germany and Hardinge CNC lathes from the US, Japanese optical curve grinders, Japanese CNC diamond roller tool grinders, etc. As well as top-level testing equipment such as profiler and roundness measuring instrument, Japan KEYENCE super depth of field microscope. Provide precision profile grinding and high-end dressing abrasive tools for national key industries such as bearings, gears, steering gears, RV reducer, guide sliders, aviation blades, steam turbine blades, and screw rods.

销售部 Marketing Dept
TEL: 0371-67644659
Web: www.zhongbanggongju.com
E-mail: zzbh2022@139.com

外贸部 Foreign Trade
TEL: +86 371 86076765
Web: www.zbshtools.com
E-mail: nancy.y@zbshtools.com

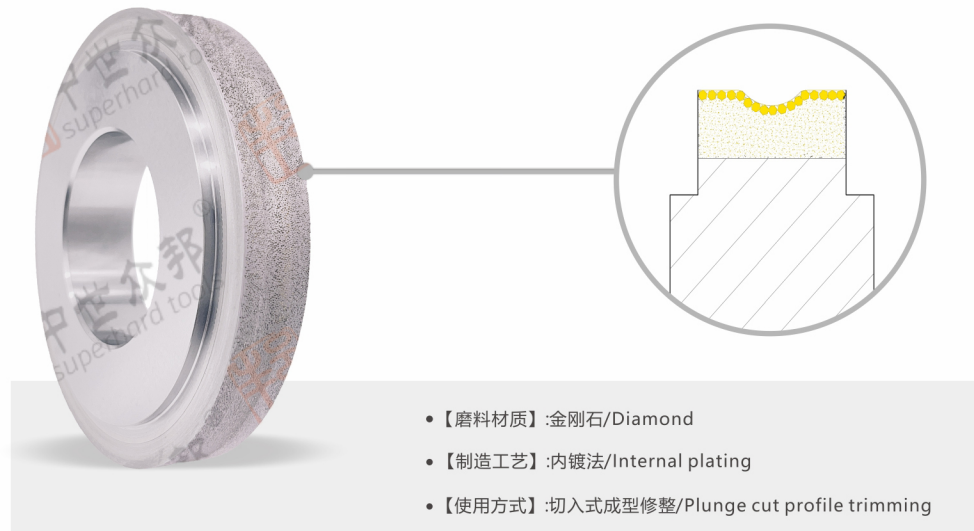


工厂地址: 郑州市新材料产业园区13号路
Plant Address: Road No.13 New Material Industrial Park, Zhengzhou City.
办公地址: 郑州市高新区银兰路58号美立方A9-1
Office Address: A9-1 M cube #58 Yinlan Road High-tech District, Zhengzhou, China.

内镀法金刚石修整滚轮 INTERNAL PLATING DIAMOND DRESSING ROLLER



轴承行业用修整滚轮 Dressing rollers for bearing industry

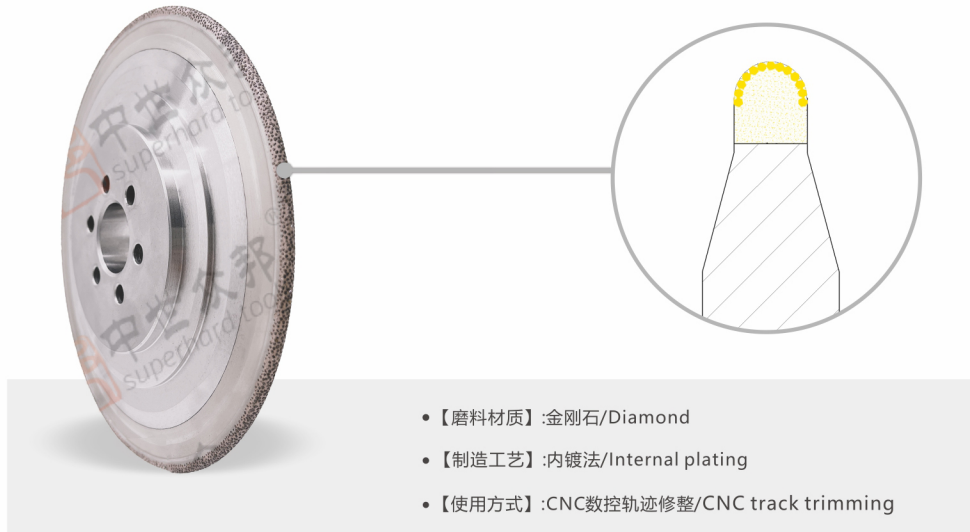


本产品配套国内外专用磨床，应用于轴承内外沟道成型磨削砂轮和圆柱滚子磨削砂轮的修整加工。

This product is equipped with special grinding machines domestic and abroad, which is used in the dressing processing of the forming grinding wheels for bearing inner and outer groove and the cylindrical roller grinding wheels.

直径D(mm)	内孔H(mm)	厚度T(mm)
100	52	22
110	52	22

齿轮行业用修整滚轮 Dressing rollers for gear industry

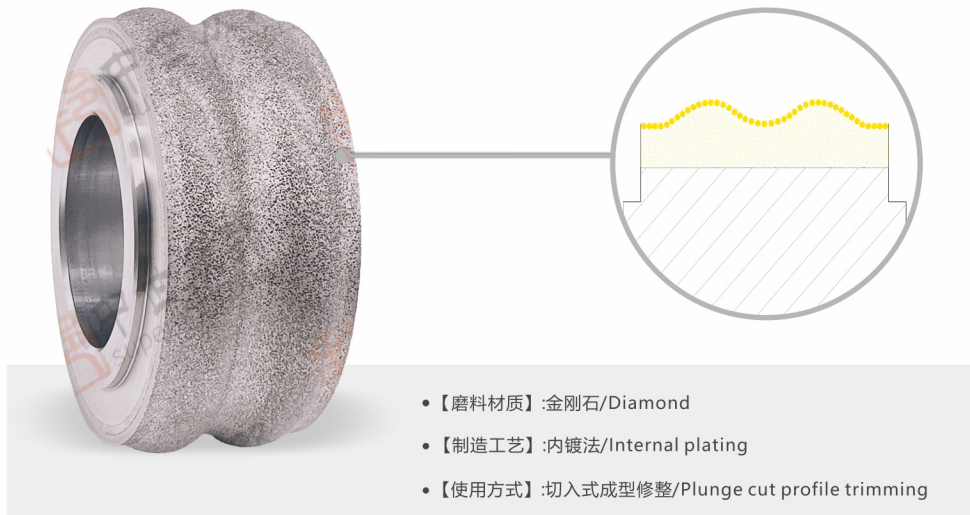


本产品主要应用于齿轮磨削领域，通过滚轮的精度来保证砂轮修整后的轮廓精度，最终加工出高精度的齿轮产品。

This product is mainly used in the field of gear grinding. The precision of the rollers ensures the contour accuracy of the grinding wheels after dressing, and finally a high-precision gear product is processed.

直径D(mm)	厚度T(mm)	内孔H(mm)	圆弧R(mm)
160	25	25	2/3/4
180	40	24	2/3/4

转向器和RV减速机行业用修整滚轮 Dressing rollers for steering gear and RV reducer industry

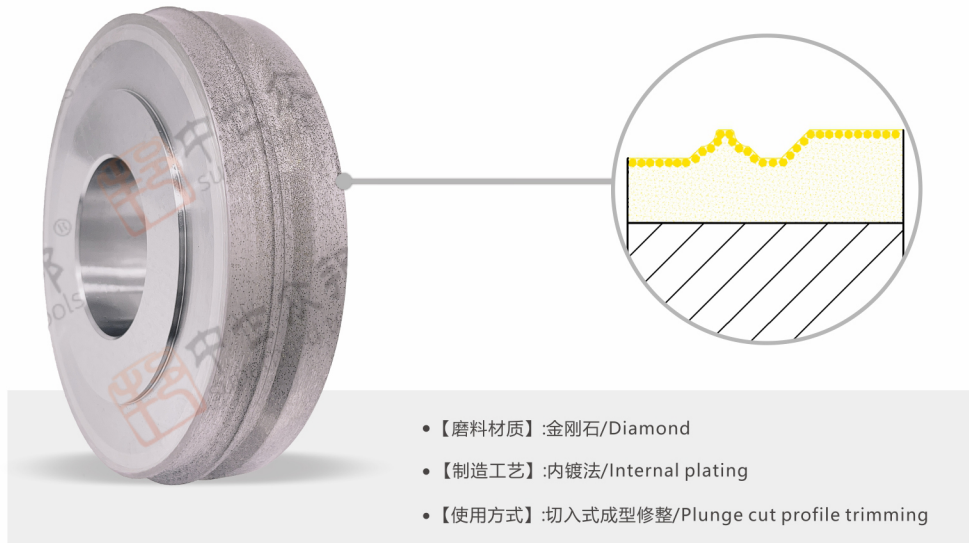


本产品配套国内外专用磨床，主要应用于转向器转子和RV减速机摆线齿轮成型磨削砂轮的修整加工。

This product is equipped with special grinding machines domestic and abroad, and is mainly used in the maintenance and processing of the steering wheel of the steering gear and the profile grinding of the cycloidal gear of the RV reducer.

直径D(mm)	内孔H(mm)	厚度T(mm)
100	52	48
127	34.925	42

导轨滑块用修整滚轮 Dressing rollers for rail slides

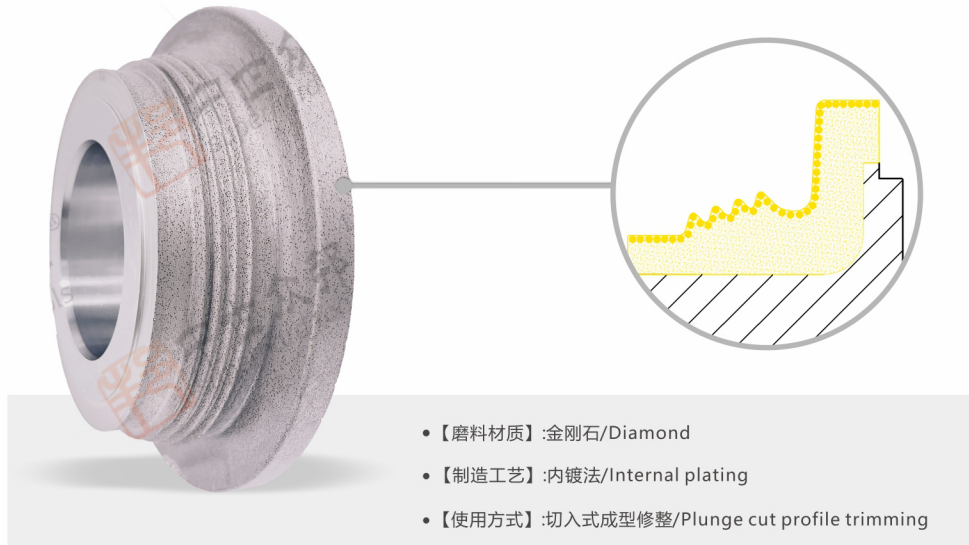


本产品配套国内外专用磨床，主要应用于各类机械设备导轨成型磨削砂轮的修整加工。

This product is equipped with special grinding machines domestic and abroad, which is mainly used in the dressing processing of profile grinding wheels for various types of mechanical equipment guide rail.

直径D(mm)	内孔H(mm)	厚度T(mm)
130	52	30
138	52	35

航空发动机叶片用修整滚轮 Dressing rollers for aircraft engine blades

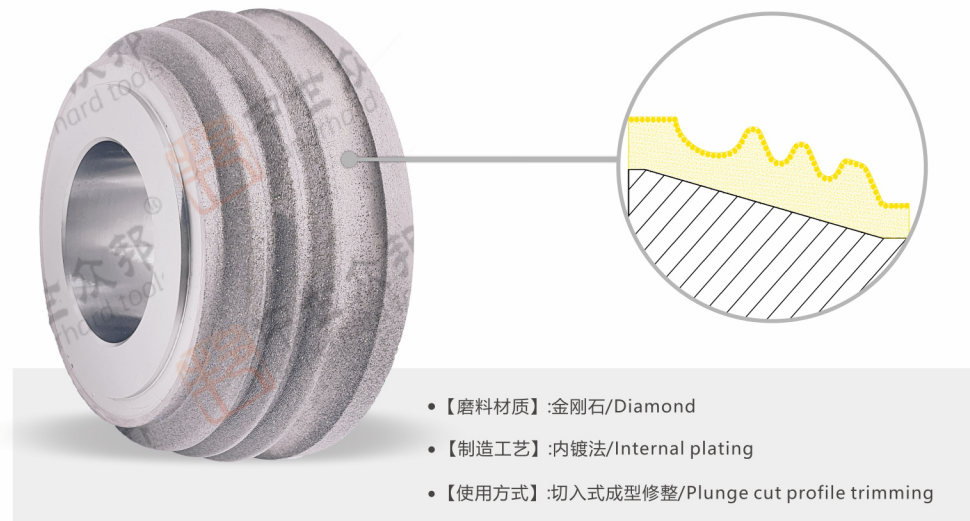


航空发动机涡轮叶片的使用环境非常恶劣，温度高，形状复杂导致应力复杂，且精度要求高。本产品配套国内外专用磨床，主要应用于涡轮叶片齿根成型磨削砂轮的修整加工。

The use environment of aircraft engine turbine blades is very harsh, the temperature is high, the complex shape leads to complex stress, and the precision is high. This product is equipped with special grinding machines domestic and abroad, which is mainly used in the dressing and processing of the profile grinding wheels for turbine blade tooth root.

直径D(mm)	内孔H(mm)	厚度T(mm)
120	52	36
130	52	38

汽轮机叶片用修整滚轮 Dressing rollers for steam turbine blades

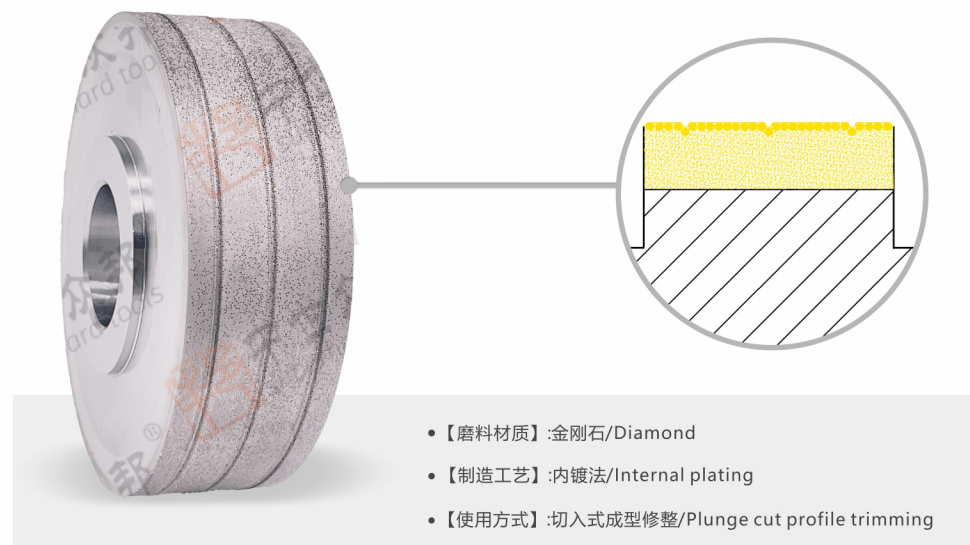


本产品配套国内外专用磨床，主要应用于汽轮机叶片成型磨削砂轮的修整加工。

This product is equipped with special grinding machines domestic and abroad, which is mainly used in the dressing of profile grinding wheels for steam turbine blade.

直径D(mm)	内孔H(mm)	厚度T(mm)
125	52	58
130	52	48

丝杠行业用修整滚轮 Dressing rollers for the screw industry



本产品配套国内外专用磨床，主要应用于滚珠丝杠成型磨削砂轮的修整加工。

This product is equipped with special grinding machines domestic and abroad, which is mainly used in the dressing of profile grinding wheels for ball screw.

直径D(mm)	内孔H(mm)	厚度T(mm)
80	30	36
100	52	38